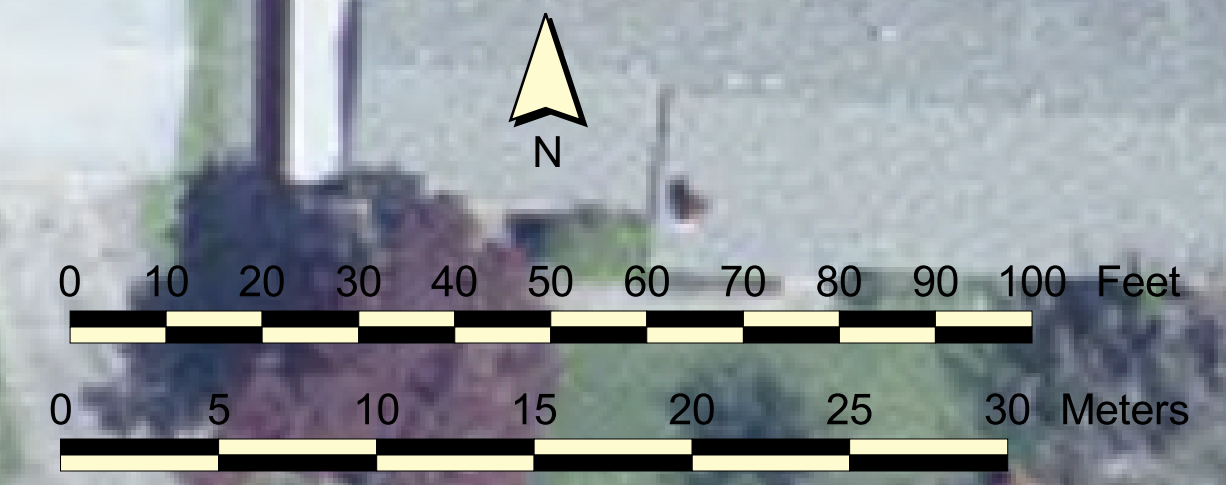
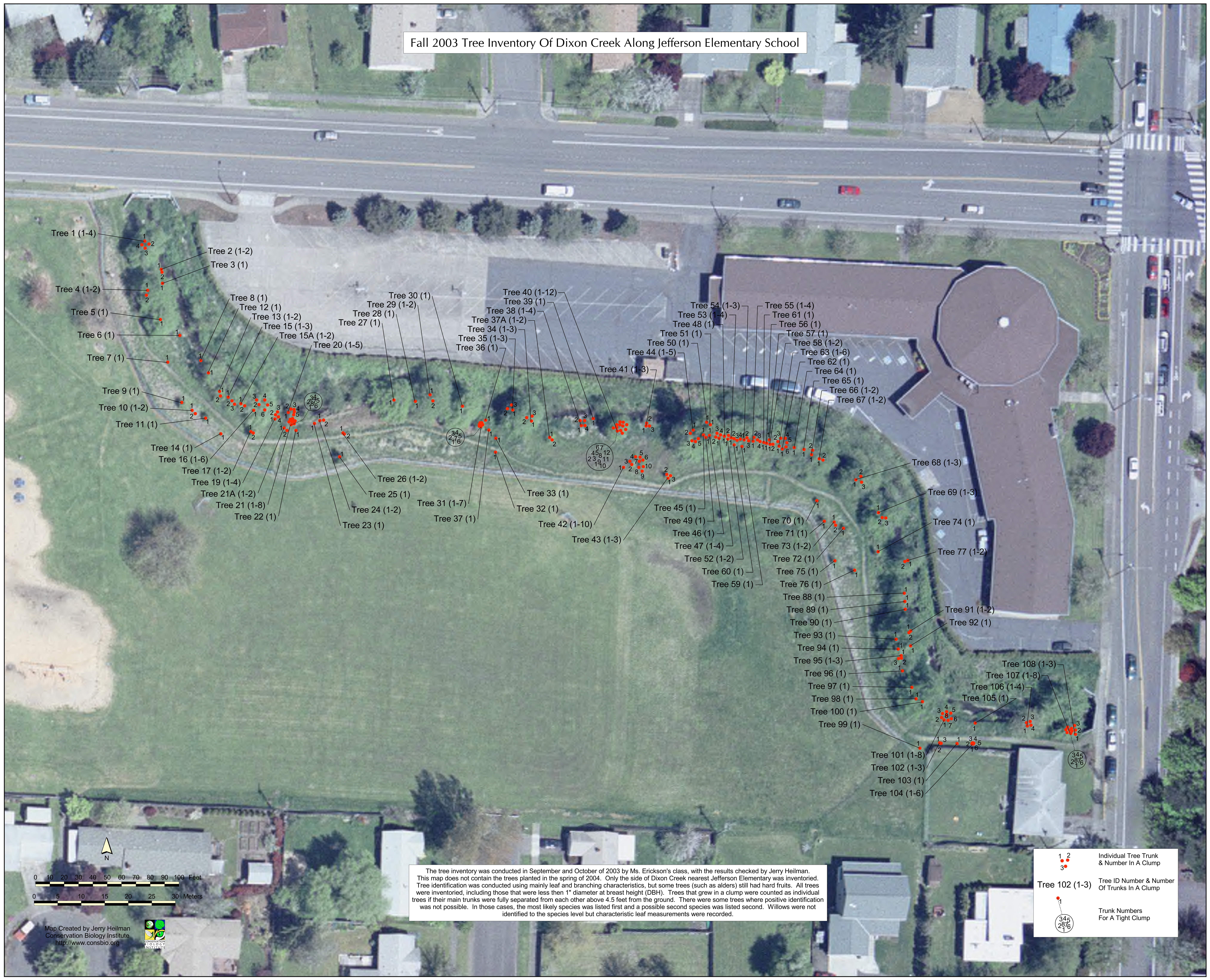


Fall 2003 Tree Inventory Of Dixon Creek Along Jefferson Elementary School



The tree inventory was conducted in September and October of 2003 by Ms. Erickson's class, with the results checked by Jerry Heilman. This map does not contain the trees planted in the spring of 2004. Only the side of Dixon Creek nearest Jefferson Elementary was inventoried. Tree identification was conducted using mainly leaf and branching characteristics, but some trees (such as alders) still had hard fruits. All trees were inventoried, including those that were less than 1" diameter at breast height (DBH). Trees that grew in a clump were counted as individual trees if their main trunks were fully separated from each other above 4.5 feet from the ground. There were some trees where positive identification was not possible. In those cases, the most likely species was listed first and a possible second species was listed second. Willows were not identified to the species level but characteristic leaf measurements were recorded.

Individual Tree Trunk & Number In A Clump
 Tree ID Number & Number Of Trunks In A Clump
 Trunk Numbers For A Tight Clump